

BEEYOND

FAITH NOW. GENERATIONS TO COME.



STILL BEYOND

WEEK 1

STILL BEYOND:
Follow God
Beyond

WEEK 2

STILL BEYOND:
Trust God
Beyond

WEEK 3

STILL BEYOND:
Prioritize God
Beyond

WEEK 4

STILL BEYOND:
Surrender to
God Beyond



Dear **BEYONDERS!**

City of Light has taken some steps of faith over the last 8 years, but nothing like the BEYOND steps of faith we took in 2023. For those of you who need a gentle reminder or new to the journey, I want to remind you what BEYOND is.

Letter from
**PASTOR
BRIAN**

We are going BEYOND to trust Him in every area of our life and BEYOND live out our faith in word and deed.

Since 2020, we have experienced an increased need for spiritual and mental health services for the communities we serve. Families are simply under increased levels of stress. We need solutions to give an increased level of spiritual, mental and physical support. God has sent more K-12 children from all over our city and suburbs that need mentorship and a safe place to grow. Spaces that were set aside for these youth are beginning to reach capacity.

By God's grace, we, the people of City of Light, committed over \$1 million dollars to the 2-year BEYOND Initiative! We have grown as a church by 15% this past year, hired two staff members, our childrens' and student ministries have grown, and significantly increased our outreach to Southeast Wisconsin. People have met Jesus for the first time, lives have been changed, and faith has been stretched and strengthened. To God be the glory for all the great things He has done!

We now find ourselves at the halfway point of this BEYOND journey. We have come too far to go back to comfort, ease, quietness, boredom, fearfulness, or anxiety. We do not want to rest on our victories and become complacent. Similarly, we do not want to wallow in any hits we have taken this year and become discouraged. Rather, we want to take the words of the Apostle Paul to heart:

"Only let your manner of life be worthy of the gospel of Christ, so that whether I come and see you or am absent, I may hear of you that you are standing firm in one spirit, with one mind, striving side by side for the faith of the gospel."
Philippians 1:27

So this November we are saying with full confidence in Christ that we are going BEYOND. My hope is that the coming weeks will be encouraging and will invigorate your faith in your faith to continue trusting and treasuring Jesus with all of your life and BEYOND!

Going **BEYOND** with you!
PASTOR BRIAN

BEYOND FOR OUR MISSION

What we started before BEYOND

Before BEYOND began, our general budget was sufficient, but we were stretched in most of our ministry areas of adults, students, and children; and we sought to do more outreach and community events as well. Our general budget amount before BEYOND over a two-year period was: \$600K

What we set out to do with BEYOND

Our vision with BEYOND was to invigorate our ministry environments to see people encounter Jesus, empower the next generation of children and students, and see life change through our adult ministries. We stretched our faith for BEYOND in this area, as we sought to put more emphasis towards staff, a space that supports church growth and outreach to Southeast Wisconsin and our world. So our BEYOND initiative goal over a two-year period was: \$2.4M.

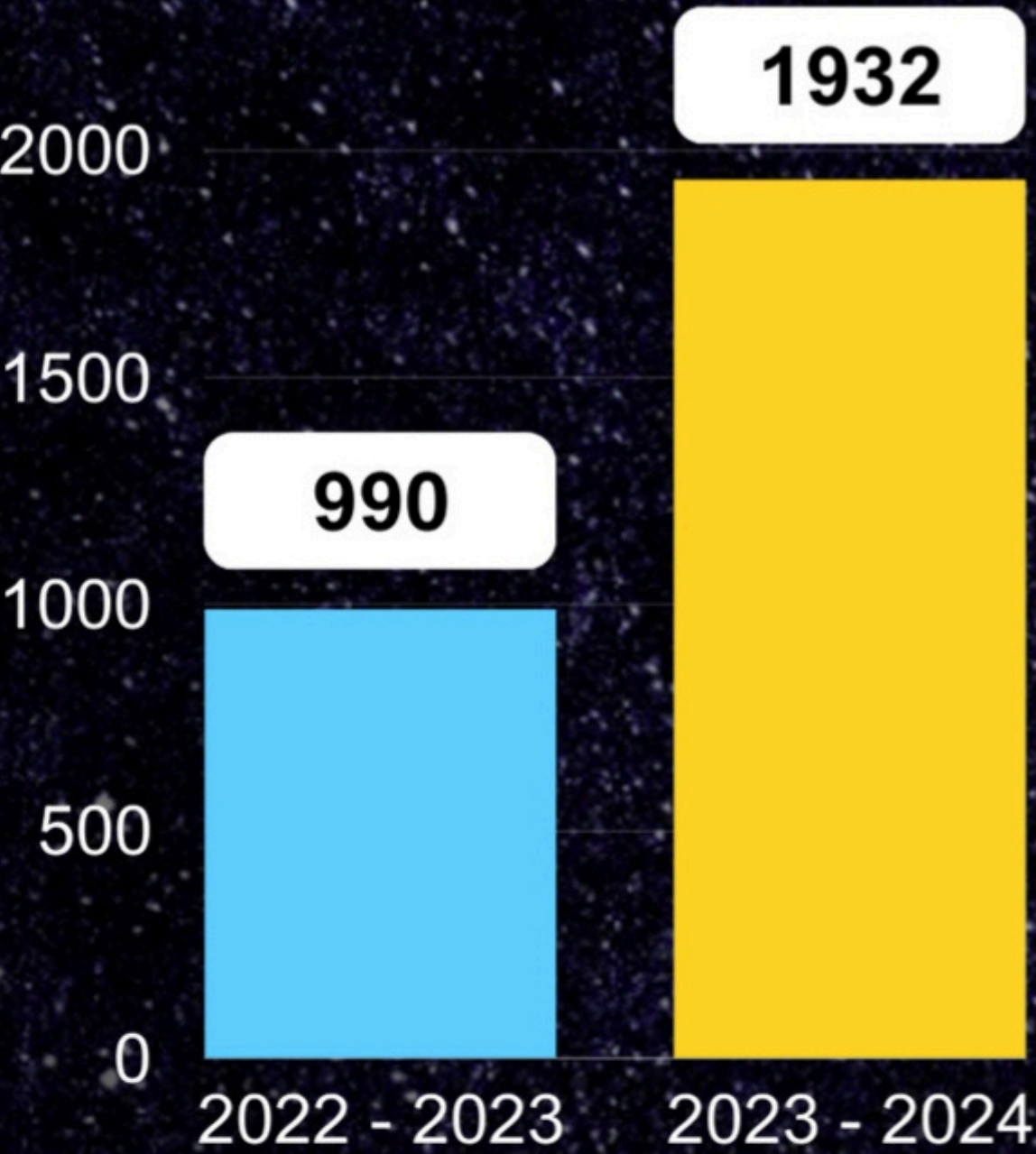
What God did through BEYOND

There was a gap between what we committed and the goal, so we are still believing God and stepping out in faith as a church family for an additional 1.4M.

BY THE NUMBERS

Attendance Growth

October 2023 - October 2024



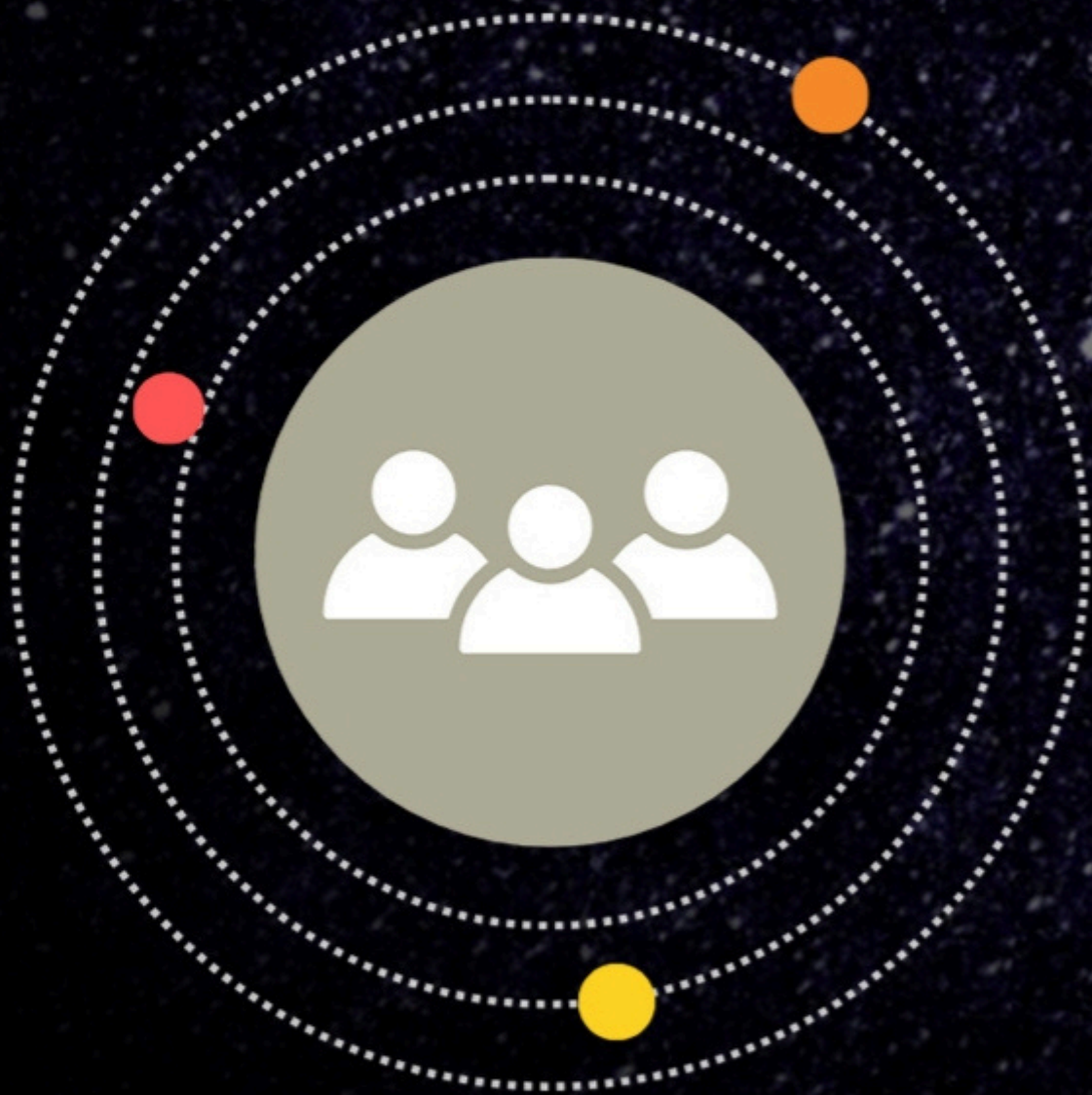
133%

2023 (6) - 2024 (14)
Student Growth



80%

2023 (25) - 2024 (45)
Kidz City Growth



97+
People
Attending
Community
Groups

325

at the start of BEYOND

100

BEYOND participation

1M

in Generosity

400



Easter
Attendance



74

Baptisms



80+

Serving in
the Church



5+

Food
Giveaways



STILL BEYOND

Where We Were
Where We Went
What Has Happened
Where We're Going

STILL BEYOND

12

Students at Camp

"WE HAVE THIS HOPE AS AN ANCHOR
FOR THE SOUL, FIRM AND SECURE." HEB. 6:19

16

Students at Student Convention



THE BEYOND JOURNEY

The BEYOND Journey is a tool designed to help a person move from money being their God to money being a tool for God's kingdom. The BEYOND Journey focuses on behaviors and attitudes of our hearts rather than on amounts or percentages, further transforming us into the likeness of Christ.

Each step of the BEYOND Journey represents growth in a lifestyle of generosity and sacrifice. These are not steps you slowly ascend to get to God, but simply a way to evaluate your growth in generosity. Scripture encourages us to how in every facet of our walk with Christ. including the grace of giving.

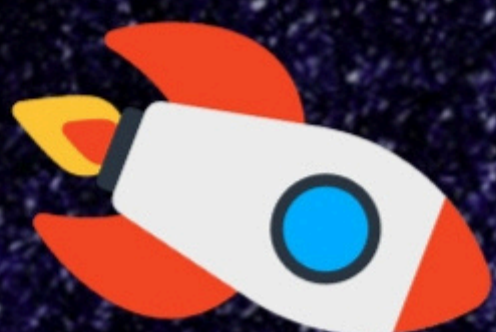
2 Corinthians 8:7

FIRST-TIME GIVER

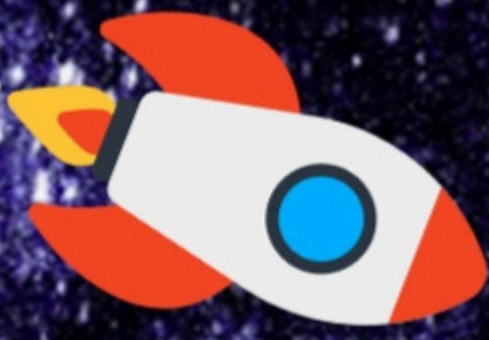
This type of giver is someone who decides to give for the first time. This is someone who decides to give something and trust God and the leaders of the Church with this gift.

CONSISTENT GIVER

This type of giver is someone who decides to give something and to give it on a consistent basis. This often requires planning, and sometimes this might be a reason for someone to set up recurring gifts online or become disciplined with giving through regular envelopes or checks



INTENTIONAL GIVER



This giver starts to make their giving an intentional choice that reflects how they feel about it in relation to other things on which they spend their money. This may also be the point of intentionality when someone begins to tithe, reflecting that they are being intentional about a certain amount/percentage that they want to give to God.

SACRIFICIAL GIVER

This type of giver begins to ask the question "Am I giving in a way that changes me? Am I giving in a way that causes my lifestyle to be different to reflect the transformation Christ is making in me?" A Sacrificial Giver's commitment to giving actually governs the rest of his/her lifestyle. A Sacrificial Giver has a giving commitment that is "larger than their current situation" so that they have to adjust the rest of their expenditures to meet that commitment.

LIFETIME GIVER

A Lifetime Giver is no longer asking the question, "God, how much more are you asking me to give?" A Lifetime Giver is asking the question, "God, how much are you asking me to keep?" They ask this so that they can release the rest into Kingdom purposes. Much like a Sacrificial Giver makes a commitment that will govern his/her monthly and annual decisions, a Lifetime Giver makes a lifetime or longer-term giving commitment that governs his/her larger decisions like homes, cars, investments, and the like.

What we are asking God for in STILL BEYOND:

BEYOND is about surrendering ourselves fully to the mission of the Gospel. God is using the City of Light to advance the kingdom here in Southeast Wisconsin. We want to accelerate our vision to reaching every man, woman, and child in Southeast Wisconsin by maximizing opportunities for people to hear, respond, and grow in the gospel of Jesus Christ. At this one-year anniversary of BEYOND, as part of our STILL BEYOND initiative, we are praying for additional funds to increase the excellence and effectiveness of our operations in worship gatherings, in children's ministry, and in discipleship growth through adult ministry. We seek to add video equipment to help produce quality videos for communication and teaching, to improve our security in our children's ministry through an enhanced check-in system. To enhance adult ministry, we seek to add an additional staff person to oversee adult discipleship so that we can continue to care and equip each person to be fully devoted to Christ. To continue to raise finances for the down payment of our next building - **2.4M**

\$2.4M



WHAT WE ASK OF YOU

We are praying that through STILL BEYOND, God will speak to us in three different ways:

1. There are some of you who are new to City of Light or new to BEYOND and you have little or no idea what this BEYOND initiative is. You joined our City of Light family sometime after last March and you wonder, "What is this BEYOND journey, and how do I become a part of it?" See, BEYOND is for ALL of us. We would love for you to jump in with us and make a BEYOND commitment for the final 12 months of BEYOND so that you too can experience the spiritual growth that comes from BEYONDLY trusting Him.



2. There are others of you who made a BEYOND commitment a year ago, and since then some hard times have come. Maybe you have stayed strong, maybe you are continuing to persevere, but it has not been easy. Things have come up that you didn't expect job loss, job change, medical expenses, childcare costs. You didn't know it would be like this when you made your commitment. And to you I want to say, be encouraged.

What we are asking God for in STILL BEYOND

Through STILL BEYOND, we seek to fund additional ministry partners outside the walls of City of Light, both in South Wisconsin and around the world.

Additionally, we desire to fund more church plants this year and to bless local non-profits doing gospel work among our neighbors. The additional BEYOND for our World dollars as part of the STILL BEYOND initiative are \$60k, which would bring our total BEYOND for our World impact to: \$200k.

\$200K



HOW WILL YOU RESPOND?

As you discern your next steps, we encourage you to:

Pray

Peter and John were seen to be BEYOND in sharing their faith. They were recognized for being with Jesus in Acts 4:13. Our boldness does not come from our personality or even from our emotions; rather it comes from seeking God through prayer. Like Peter and John, our boldness comes from being with Jesus.

Reflect

As you are praying, we believe the Holy Spirit will be speaking to you. Take some time to reflect on what you think God is saying to you. Talk together with your spouse or with a trusted friend in your Community Group about how you sense the Spirit leading you. If you are married, seek unity in your decision by continuing to pray and reflect, humbling yourselves before God and before each other.

Take a step BEYOND

Discipleship and stewardship go hand in hand. As we grow deeper into our relationship with God, we learn what it means to value Him above all else. Growing as a follower of Jesus is a journey of ongoing steps of trust in Jesus. We do not grow without taking a step of faith. In fact, the writer of Hebrews says that without faith it is impossible to please God (Hebrews 11:6). So growing in stewardship requires us taking a step in trusting Jesus as we give what He has called us to give because we value Him more than anything.

HOW WILL YOU RESPOND?

A BEYOND step for some of you will be to make your first BEYOND commitment this year to give generously.

A BEYOND step for others of you will be to finish strong this BEYOND journey. Being BEYOND in our generosity is not easy.

Then there is a third group of us whose BEYOND step will be to follow Jesus as He leads us to increase our BEYOND commitment.

As you process what God is calling you to do, we encourage to prayerfully review the Generosity Ladder. This helpful tool has been used many City of Light Church Family to take a BEYOND step in their stewardship of God's resources. As we all take a step to the next place on this journey, we will be able to accomplish our BEYOND vision and more.....



YOUR COMMITMENT

**BEYOND OURSELVES - \$1.2M
(New Staff + General Budget)**

- \$300k – Enhance our impact of serving current and future families by increasing staff
- \$900k – Continue investing in all areas of in person and online ministry



BEYOND OUR BORDERS - \$1M (Down Payment + Renovations)

- \$1M – Invest in a larger building with more family spaces, auditorium, outdoor gathering area, entrepreneur hub, student areas and more





BEYOND OUR WALLS - \$200K (Community Enrichment)

- \$200K – family, youth & wellness programs for total family enrichment at the 68th & Burleigh Building

ONE YEAR GIFT CHART

\$2,400,000	
12 MONTH GIFT	MONTHLY GIFT
\$250,000	\$20,834
\$150,000	\$12,500
\$100,000	\$8,334
\$75,000	\$6,250
\$50,000	\$4,166
\$25,000	\$2,084
\$20,000	\$1,666
\$15,000	\$1,250
\$10,000	\$834
\$7,500	\$626
\$5,000	\$416
\$2,500	\$208
Less Than \$1,500	

I AM NEW TO THE BEYOND JOURNEY

☐

I would like to make a 12-month commitment to BEYOND generosity in the amount of: \$_____

I AM NEW TO THE BEYOND JOURNEY

My current commitment is: \$_____

At this halfway point in the BEYOND journey, I would like to:

☐ Confirm my BEYOND commitment to finish strong

☐ Increase my BEYOND commitment to: \$_____

NAME (S) _____

PHONE _____

EMAIL _____

BEYOND OURSELVES - \$1.2M

- New Staff + General Budget

BEYOND OUR BORDERS - \$1M

- Down Payment + Renovations

BEYOND OUR WALLS - \$200K

- Community Enrichment

STILL BEYOND

I AM NEW TO THE BEYOND JOURNEY

I would like to make a 12-month gift to BEYOND in the amount of:
\$ _____

I AM NEW TO THE BEYOND JOURNEY

My current commitment is: \$ _____

At this halfway point in the BEYOND journey, I would like to:

Confirm my BEYOND gift to finish strong

Increase my monthly BEYOND gift to: \$ _____

NAME (S) _____

PHONE _____

EMAIL _____



BEYOND

mycityoflight.com/beyond/